

NOTES: See Tabulated Sheet

1 Relief permits component shafts to near butt.

2 Hubs and HELI-CAL FLEXURE are made from a single piece of material.

3 Set Screw attachment, hex. socket, ISO std., cup point set screw furnished: both hubs. Set Screw size based on bore size:

- .090in thru .117in : M2x0.4
- .118in thru .136in : M2.5x0.45
- .137in thru .195in : M3x0.5
- .196in thru .670in : M4x0.7

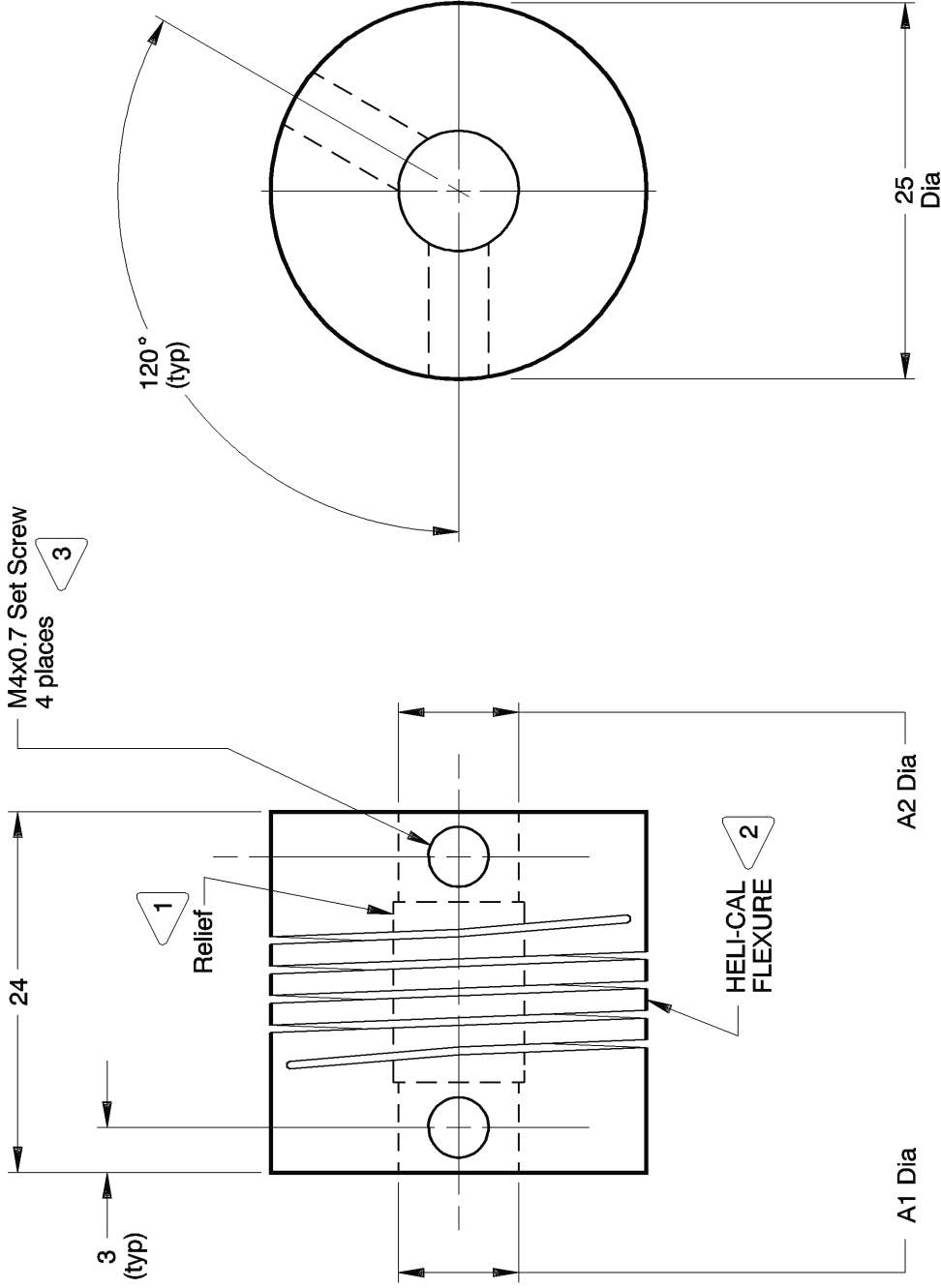
4 Backlash: None. No lubrication required.

5 Permitted axial motion from free length: ± .25mm.

6 RPM: Up to 10,000, depending upon application.

7 Working torque ratings are based upon continuous duty with noted misalignments applied separately and may be increased with improved alignment: See Tabulated Sheet

8 Permissible shaft misalignment: Angular, up to 5 degrees. Offset, up to .25mm. (TIR, .50mm.)



W7 25-8mm-8mm SHOWN

NOTICE: THE INFORMATION AND DATA CONTAINED HEREIN IS CONSIDERED PROPRIETARY TO HELICAL PRODUCTS COMPANY, INC., AND SHALL REMAIN THE EXCLUSIVE PROPERTY OF HELICAL. THE HOLDER WILL ASSUME CUSTODY AND CONTROL THAT THIS DOCUMENT WILL NOT BE COPIED, REPRODUCED OR DISCLOSED WITHOUT THE EXPRESS WRITTEN CONSENT OF HELICAL. POSSESSION OF THIS DOCUMENT DOES NOT CONSTITUTE A GRANT TO MANUFACTURE ANY ITEMS. DO NOT SCALE DRAWING.

9-14-98 DATE

Clerical format update/
No revision

BJM MC
REVISION CHK

Unless otherwise noted dimensions in millimeters.
Tolerances are:
Decimals: X ± .5mm
X.X ± .25mm
X.XX ± .15mm
Angles: ± 2 degrees
Break sharp corners .25mm max.

APPROVALS

DRAWN	MM	DATE
CHECKED	GLB	8-10-78
PRODN	APA	8-10-78
ISSUED		
WEIGHT	78g (calc)	
SCALE	2/1	SIZE A

TITLE

MATERIAL

FINISH

DWG NO

HELICAL PRODUCTS CO., INC.
P.O. BOX 1069 SANTA MARIA, CA. 93456 U.S.A
PHONE (805) 928-3851 FSC13201

HELICAL FLEXIBLE SHAFT COUPLING

17-4PH CRES HT

Natural

W7 25

ADDITION DATE	PART NUMBER	BORE TOLERANCES		TORQUES (Nm)			TORSIONAL FLEXIBILITY	MASS MOMENT OF INERTIA	COMMENTS
		A1 Dia	A2 Dia	Non-reversing	Shock or Reversing	Momentary			
		+0.002in -0.000in	+0.05mm -0.00mm						
		A1 Dia	A2 Dia						
09 Mar 88	W725-6mm-3.5mm	6.00mm	3.50mm	2.9	1.4	5.7			
09 Mar 88	W725-6mm-3.56mm	6.00mm	3.56mm	2.9	1.4	5.7			
29 Jun 05	W725-6mm-5mm	6.00mm	5.00mm	2.9	1.4	5.7			
09 Mar 88	W725-6mm-6mm	6.00mm	6.00mm	2.9	1.4	5.7			
03 May 88	W725-8-3mm	.250in	3.00mm	2.8	1.4	5.6			

*** NOTE: Bore greater than 10.00mm Dia: bore depth is 6.00mm**

HELICAL PRODUCTS CO. INC
P.O. BOX 1069 SANTA MARIA, CA. 93456 U.S.A
PHONE (805) 928-3851 FSCI3201

TITLE **HELICAL FLEXIBLE SHAFT COUPLING**
TABULATED BORE SIZES

DWG NO **W725**

APPROVALS	DATE
DRAWN	
CHECKED	
PRODN	
ISSUED	1/10/2012 7:43:26 AM

NOTICE: THE INFORMATION AND DATA CONTAINED HEREIN IS CONSIDERED PROPRIETARY TO HELICAL PRODUCTS COMPANY, INC., AND SHALL REMAIN THE EXCLUSIVE PROPERTY OF HELICAL. THE HOLDER WILL ASSUME CUSTODY AND CONTROL THAT THIS DOCUMENT WILL NOT BE COPIED, REPRODUCED OR DISCLOSED WITHOUT THE EXPRESS WRITTEN CONSENT OF HELICAL. POSSESSION OF THIS DOCUMENT DOES NOT CONSTITUTE A GRANT TO MANUFACTURE ANY ITEMS.

ADDITIONAL BORE SIZES AVAILABLE UPON REQUEST

ADDITION DATE	PART NUMBER	BORE TOLERANCES		TORQUES (Nm)			TORSIONAL FLEXIBILITY	MASS MOMENT OF INERTIA	COMMENTS	
		+002in -000in	+05mm -00mm	Non-reversing	Shock or Reversing	Momentary				
							A1 Dia	A2 Dia	deg/Nm	
03 May 88	W725-8-4mm	.250in	4.00mm	2.8	1.4	5.6			A1	A2
03 May 88	W725-8-5mm	.250in	5.00mm	2.8	1.4	5.6				
09 Mar 88	W725-8-6mm	.250in	6.00mm	2.8	1.4	5.6				
03 May 88	W725-8-8	.250in	.250in	2.8	1.4	5.6				
09 Mar 88	W725-7mm-4mm	7.00mm	4.00mm	2.8	1.4	5.5				
	W725-7mm-6mm	7.00mm	6.00mm	2.8	1.4	5.5				
09 Mar 88	W725-7mm-7mm	7.00mm	7.00mm	2.8	1.4	5.5				
09 May 00	W725-8mm-3mm	8.00mm	3.00mm	2.6	1.3	5.1				
	W725-8mm-6	8.00mm	.188in	2.6	1.3	5.1				
	W725-8mm-5mm	8.00mm	5.00mm	2.6	1.3	5.1				
09 Mar 88	W725-8mm-6mm	8.00mm	6.00mm	2.6	1.3	5.1				
03 May 88	W725-8mm-8	8.00mm	.250in	2.6	1.3	5.1				
	W725-8mm-6.8mm	8.00mm	6.80mm	2.6	1.3	5.1				
	W725-8mm-7mm	8.00mm	7.00mm	2.6	1.3	5.1				
10 Aug 07	W725-8mm-10	8.00mm	.313in	2.6	1.3	5.1				
09 Mar 88	W725-8mm-8mm	8.00mm	8.00mm	2.6	1.3	5.1				
21 Aug 90	W725-9mm-6mm	9.00mm	6.00mm	2.4	1.2	4.7				
03 May 88	W725-9mm-8mm	9.00mm	8.00mm	2.4	1.2	4.7				
09 Mar 88	W725-9mm-9mm	9.00mm	9.00mm	2.4	1.2	4.7				
	W725-12-6mm	.375in	6.00mm	2.3	1.1	4.5				
24 Jan 91	W725-12-8	.375in	.250in	2.3	1.1	4.5				
	W725-12-7mm	.375in	7.00mm	2.3	1.1	4.5				
	W725-12-8mm	.375in	8.00mm	2.3	1.1	4.5				
09 Mar 88	W725-12-9mm	.375in	9.00mm	2.3	1.1	4.5				
03 May 88	W725-12-12	.375in	.375in	2.3	1.1	4.5				
	W725-10mm-3mm	10.00mm	3.00mm	2.2	1.1	4.3				
09 Mar 88	W725-10mm-4mm	10.00mm	4.00mm	2.2	1.1	4.3				
	W725-10mm-6	10.00mm	.188in	2.2	1.1	4.3				
16 Jun 89	W725-10mm-5mm	10.00mm	5.00mm	2.2	1.1	4.3				
09 Mar 88	W725-10mm-6mm	10.00mm	6.00mm	2.2	1.1	4.3				
26 Mar 90	W725-10mm-8	10.00mm	.250in	2.2	1.1	4.3				

*** NOTE: Bore greater than 10.00mm Dia: bore depth is 6.00mm**

NOTICE: THE INFORMATION AND DATA CONTAINED HEREIN IS CONSIDERED PROPRIETARY TO HELICAL PRODUCTS COMPANY, INC., AND SHALL REMAIN THE EXCLUSIVE PROPERTY OF HELICAL. THE HOLDER WILL ASSUME CUSTODY AND CONTROL THAT THIS DOCUMENT WILL NOT BE COPIED, REPRODUCED OR DISCLOSED WITHOUT THE EXPRESS WRITTEN CONSENT OF HELICAL. POSSESSION OF THIS DOCUMENT DOES NOT CONSTITUTE A GRANT TO MANUFACTURE ANY ITEMS.

ADDITIONAL BORE SIZES AVAILABLE UPON REQUEST

APPROVALS	DATE	HELICAL PRODUCTS CO. INC
DRAWN		P.O. BOX 1069 SANTA MARIA, CA. 93456 U.S.A
CHECKED		PHONE (805) 928-3851/FSCI3201
PRODN		TITLE HELICAL FLEXIBLE SHAFT COUPLING
ISSUED	1/10/2012 7:43:26 AM	TABULATED BORE SIZES
		DWG NO W725

ADDITION DATE	PART NUMBER	BORE TOLERANCES		TORQUES (Nm)			TORSIONAL FLEXIBILITY	MASS MOMENT OF INERTIA	COMMENTS	
		+002in -000in	+05mm -00mm	Non-reversing	Shock or Reversing	Momentary				
							A1 Dia	A2 Dia	deg/Nm	
09 Mar 88	W725-10mm-7mm	10.00mm	7.00mm	2.2	1.1	4.3			A1	A2
09 Mar 88	W725-10mm-8mm	10.00mm	8.00mm	2.2	1.1	4.3				
09 Mar 88	W725-10mm-9mm	10.00mm	9.00mm	2.2	1.1	4.3				
09 Mar 88	W725-10mm-12	10.00mm	.375in	2.2	1.1	4.3				
09 Mar 88	W725-10mm-10mm	10.00mm	10.00mm	2.2	1.1	4.3				
11 Jun 10	W725-11mm-10mm	*11.00mm	10.00mm	2.2	1.1	4.3				
23 May 01	W725-12mm-5mm	*12.00mm	5.00mm	2.2	1.1	4.3				
16 Feb 90	W725-12mm-6mm	*12.00mm	6.00mm	2.2	1.1	4.3				
	W725-12mm-8mm	*12.00mm	8.00mm	2.2	1.1	4.3				
21 Nov 00	W725-12mm-12	*12.00mm	.375in	2.2	1.1	4.3				
	W725-12mm-10mm	*12.00mm	10.00mm	2.2	1.1	4.3				
13 Mar 03	W725-12mm-12mm	*12.00mm	*12.00mm	2.2	1.1	4.3				
	W725-14mm-6mm	*14.00mm	6.00mm	2.2	1.1	4.3				
23 Jan 06	W725-14mm-8mm	*14.00mm	8.00mm	2.2	1.1	4.3				
10 Apr 08	W725-14mm-12	*14.00mm	.375in	2.2	1.1	4.3				
09 Jan 12	W725-14mm-12mm	*14.00mm	*12.00mm	2.2	1.1	4.3				
16 Jan 09	W725-15mm-8	*15.00mm	.250in	2.2	1.1	4.3				
03 May 88	W725-15mm-8mm	*15.00mm	8.00mm	2.2	1.1	4.3				
	W725-20-10mm	*.625in	10.00mm	2.2	1.1	4.3				
09 May 03	W725-16mm-16mm	*16.00mm	*16.00mm	2.2	1.1	4.3				
	W725-17mm-8mm	*17.00mm	8.00mm	2.2	1.1	4.3				
11 MAR 14	W725-20-8	*.625in	.250in	2.2	1.1	4.3				
15 JUL 14	W725-12mm-4mm	*12.00mm	4.00mm	2.2	1.1	4.3				
4 FEB 15	W725-8mm-7.5mm	8.00mm	7.50mm	2.6	1.3	5.1				

*** NOTE: Bores greater than 0.00mm Dia: bore depth is 0.00mm**

NOTICE: THE INFORMATION AND DATA CONTAINED HEREIN IS CONSIDERED PROPRIETARY TO HELICAL PRODUCTS COMPANY, INC., AND SHALL REMAIN THE EXCLUSIVE PROPERTY OF HELICAL. THE HOLDER WILL ASSUME CUSTODY AND CONTROL THAT THIS DOCUMENT WILL NOT BE COPIED, REPRODUCED OR DISCLOSED WITHOUT THE EXPRESS WRITTEN CONSENT OF HELICAL. POSSESSION OF THIS DOCUMENT DOES NOT CONSTITUTE A GRANT TO MANUFACTURE ANY ITEMS.

ADDITIONAL BORE SIZES AVAILABLE UPON REQUEST

APPROVALS DATE
 DRAWN
 CHECKED
 PRODN
 ISSUED
 1/10/2012
 7: 43: 26 AM

HELICAL PRODUCTS CO. INC
 P.O. BOX 1069 SANTA MARIA, CA. 93456 U.S.A
 PHONE (805) 928-3851/FSCI3201

TITLE
HELICAL FLEXIBLE SHAFT COUPLING

TABULATED BORE SIZES
 DWG NO
W725